

FOR THE UNDERSERVED.

OPLAN TACAYAN:

PAGTAPNA SANG FILARIA

**A Community-Based Public Health Intervention against
Bancroftian Filariasis for the Panay-Bukidnon
Indigenous People of Tacayan, Tapaz, Capiz, Philippines**

DOFITAS, FANDINOLA, PARRENAS, SAMPANI, TAN

DR. PHILIP IAN PADILLA, MENTOR

GEOGRAPHIC LOCATION

Brgy. Tacayan, Tapaz, Capiz



GETTING THERE...







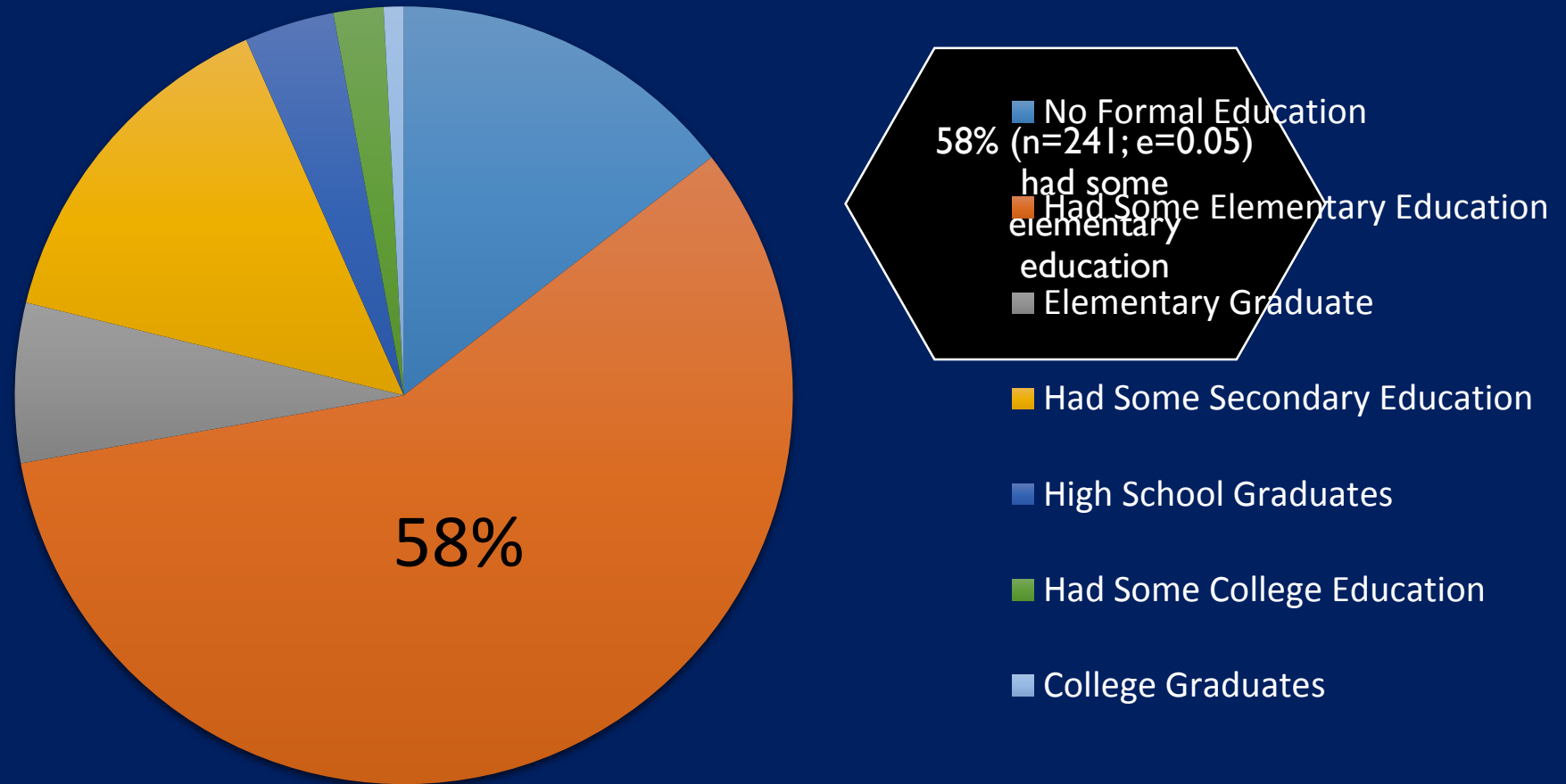
114

HOUSEHOLDS

540

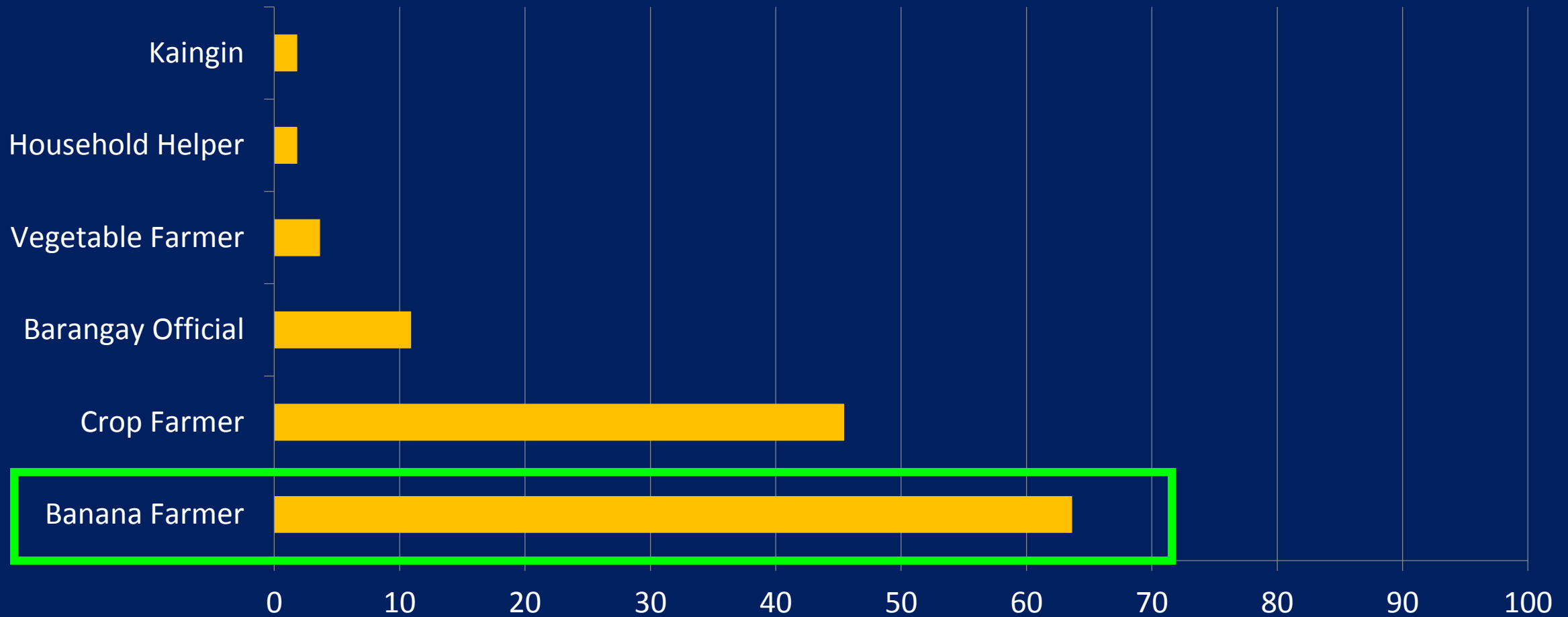
TOTAL
POPULATION

Highest Educational Attainment of Residents of Brgy. Tacayan, Tapaz, Capiz¹



¹ June 2015 House-to-house Survey in Brgy. Tacayan, Tapaz, Capiz (n=241, e=0.05) by Tan, L.

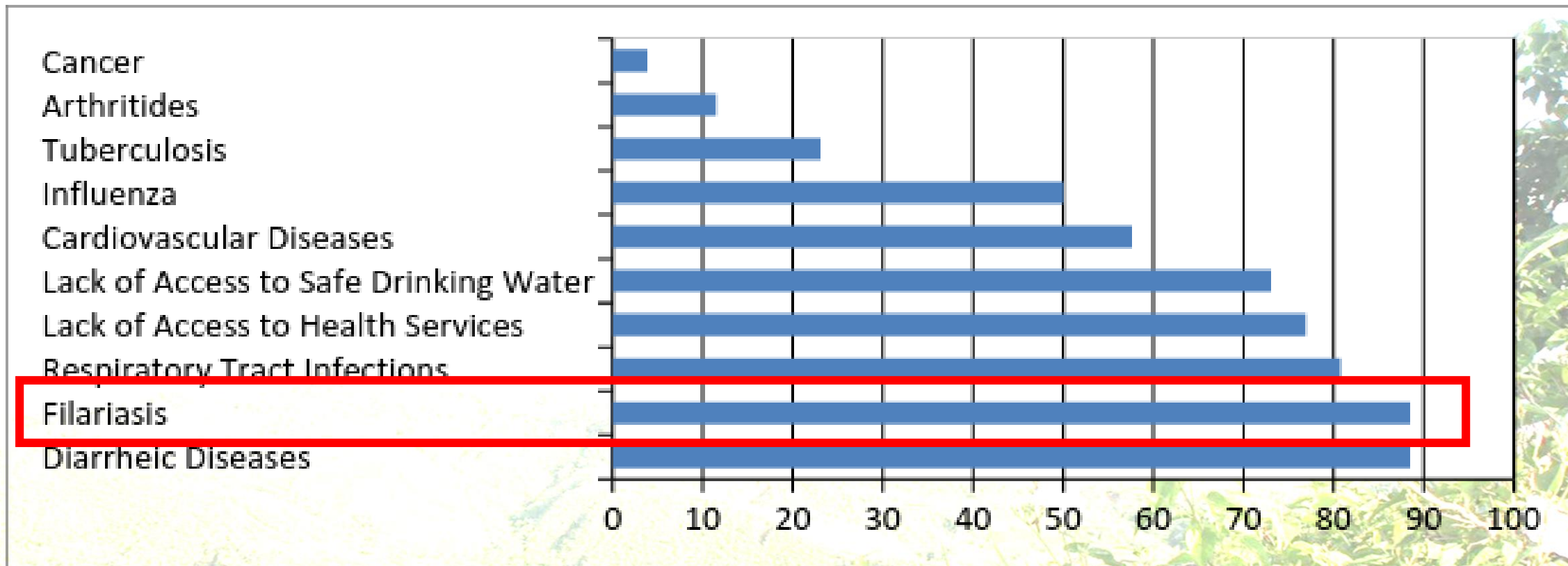
Occupation of Households of Brgy. Tacayan, Tapaz, Capiz¹



¹ June 2015 House-to-house Survey in Brgy. Tacayan, Tapaz, Capiz (n=241, e=0.05) by Tan, L.

MAJORITY OF THE PEOPLE ARE
BANANA FARMERS





Perceived Community Health Problems among Residents of Brgy. Tacayan, Tapaz, Capiz¹

¹ June 2015 House-to-house Survey in Brgy. Tacayan, Tapaz, Capiz (n=241, e=0.05) by Tan, L.

Lymphatic Filariasis

- parasitic infection transmitted to humans through the bite of an infected mosquito
- It is caused by filarial worms, *W. bancrofti*, *B. malayi* and *B. timori*
- adult worms in the lymphatic vessels causes painful, disfiguring swelling of the legs and genital organs.
- chronic outcomes of the disease are not only physically disabling but are also psychosocially impairing.



FILARIASIS IN THE LOCALE

- In **1997**, **WHO** has mandated that Filariasis be globally eliminated by the year 2020
- Tapaz is the only municipality in Capiz to have filariasis cases
- In 2015, this barangay cluster has a **microfilaremia rate of 6.4/1000** indicating the continuing presence of the disease¹

¹ Provincial Health Office of Capiz



Wucheria bancrofti in blood
WHO/TDR/Stammers



Images Source: Provincial Health Office of Capiz

A group of children, including boys and girls, are standing in a field of tall grass and banana plants. Some of the children have their hands raised, and one child in the foreground is wearing a red shirt and green shorts. The background is filled with lush greenery and a clear blue sky.

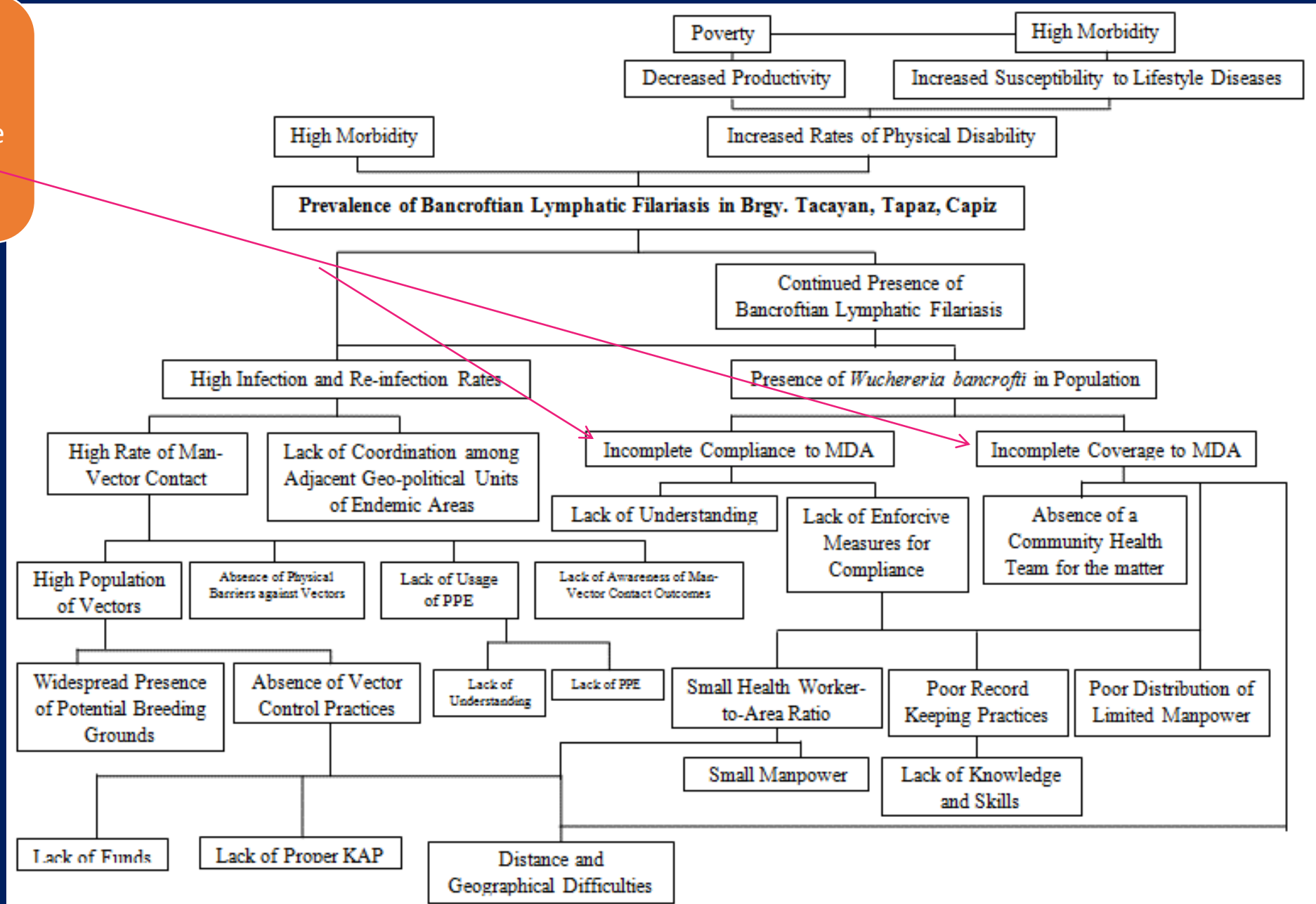
THE CHALLENGE

**The Prevalence and Transmission
of
Bancroftian Filariasis
among the Panay Bukidnons
of Brgy. Tacayan, Tapaz, Capiz**

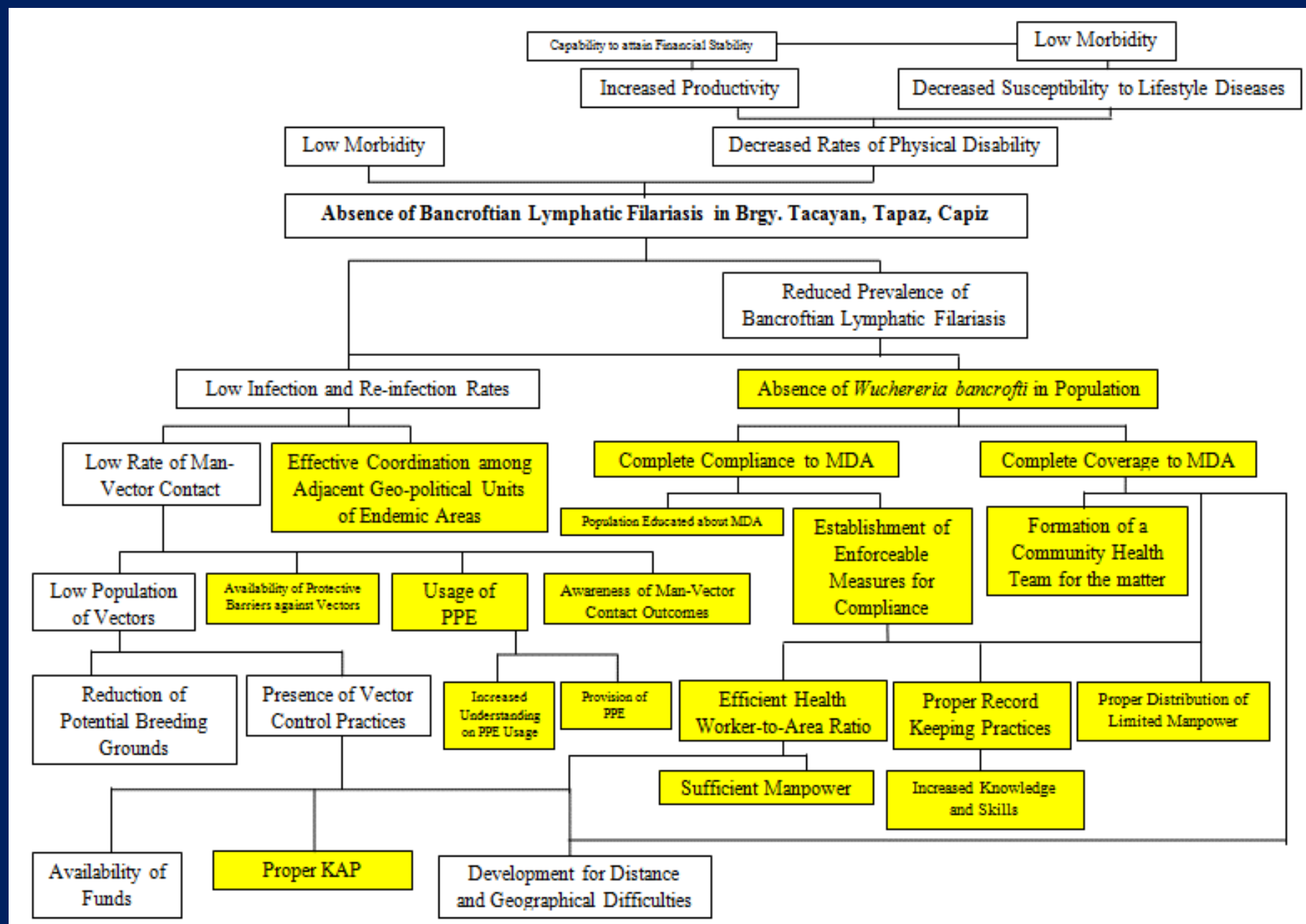
THE ANATOMY OF THE PROBLEM



46.37% Compliance and 73.19% Coverage of MDA Drugs¹



The Anatomy of the Proposed Solution:





OPLAN TACAYAN: PAGTAPNA SANG FILARIA



TACAYAN

FOR



FILARIASIS



PRIMARY GOAL

The team's primary strategic objective was **to attain 0% microfilaremia rate** of Bancroftian Filariasis in Brgy. Tacayan, Tapaz, Capiz.

TARGET HEALTH ISSUE

LOW COVERAGE AND
COMPLIANCE TO MDA



DOT MASS DRUG ADMINISTRATION

Key Intervention



DIRECTLY OBSERVED TREATMENT MASS DRUG ADMINISTRATION (DOT MDA)





STRATEGIC ZONING AND CREATION OF COMMUNITY HEALTH TEAM (CHT)





CHT TRAINING ON PROPER MDA DRUG DISPENSING



TARGET HEALTH ISSUE

LOW COVERAGE AND
COMPLIANCE TO MDA

HIGH EXPOSURE TO VECTORS



DOT MASS DRUG ADMINISTRATION



DISTRIBUTION OF ITMNs and PPEs

Key Intervention



DISTRIBUTION OF PERSONAL PROTECTIVE EQUIPMENT (PPE)





DISTRIBUTION OF INSECTICIDE TREATED MOSQUITO NETS





Moskiteru aton gamitun, Filariasis TAPNAUNI!

Paano butangan bulung ang moskiteru:

1. Magpukob sang gwanth.

2. Halo ang tsakto nga sukut sang tubig kag bulung sa palanggana (Magkonsulta sa Community Health Team para sa tsakto nga sukut kag safe nga bulung).

3. Huloman ang bilog nga moskiteru sa tubig nga may bulung.

4. Alahon ang moskiteru sang mahinay, indì ini pagpugon.

5. Bulad ang moskiteru asta magmala.

6. Ihahay ang tubig nga may bulung sa ginuboon nga dula. Siguraduhon nga malayo ini sa mga kasapatan kag mga pananam.

7. Hugasang sang tubig kag habon ang mga kamot kag balde nga gingamit.

TANDAAN:
Butangan swat sang bulung ang moskiteru pagkatapos sang isa ka tubig.
Source: World Health Organization (WHO)

2016

Jan	Feb	Mar
1 2 3 4 5 6 7 8 9 10 11 12 13 14 15 16 17 18 19 20 21 22 23 24 25 26 27 28 29 30 31	1 2 3 4 5 6 7 8 9 10 11 12 13 14 15 16 17 18 19 20 21 22 23 24 25 26 27 28	1 2 3 4 5 6 7 8 9 10 11 12 13 14 15 16 17 18 19 20 21 22 23 24 25 26 27 28 29 30 31
Apr	May	June
1 2 3 4 5 6 7 8 9 10 11 12 13 14 15 16 17 18 19 20 21 22 23 24 25 26 27 28 29 30	1 2 3 4 5 6 7 8 9 10 11 12 13 14 15 16 17 18 19 20 21 22 23 24 25 26 27 28 29 30 31	1 2 3 4 5 6 7 8 9 10 11 12 13 14 15 16 17 18 19 20 21 22 23 24 25 26 27 28 29 30
July	August	September
1 2 3 4 5 6 7 8 9 10 11 12 13 14 15 16 17 18 19 20 21 22 23 24 25 26 27 28 29 30 31	1 2 3 4 5 6 7 8 9 10 11 12 13 14 15 16 17 18 19 20 21 22 23 24 25 26 27 28 29 30 31	1 2 3 4 5 6 7 8 9 10 11 12 13 14 15 16 17 18 19 20 21 22 23 24 25 26 27 28 29 30
October	November	December
1 2 3 4 5 6 7 8 9 10 11 12 13 14 15 16 17 18 19 20 21 22 23 24 25 26 27 28 29 30 31	1 2 3 4 5 6 7 8 9 10 11 12 13 14 15 16 17 18 19 20 21 22 23 24 25 26 27 28 29 30	1 2 3 4 5 6 7 8 9 10 11 12 13 14 15 16 17 18 19 20 21 22 23 24 25 26 27 28 29 30 31

2017

Jan	Feb	Mar
1 2 3 4 5 6 7 8 9 10 11 12 13 14 15 16 17 18 19 20 21 22 23 24 25 26 27 28 29 30 31	1 2 3 4 5 6 7 8 9 10 11 12 13 14 15 16 17 18 19 20 21 22 23 24 25 26 27 28	1 2 3 4 5 6 7 8 9 10 11 12 13 14 15 16 17 18 19 20 21 22 23 24 25 26 27 28 29 30 31
Apr	May	June
1 2 3 4 5 6 7 8 9 10 11 12 13 14 15 16 17 18 19 20 21 22 23 24 25 26 27 28 29 30	1 2 3 4 5 6 7 8 9 10 11 12 13 14 15 16 17 18 19 20 21 22 23 24 25 26 27 28 29 30 31	1 2 3 4 5 6 7 8 9 10 11 12 13 14 15 16 17 18 19 20 21 22 23 24 25 26 27 28 29 30
July	August	September
1 2 3 4 5 6 7 8 9 10 11 12 13 14 15 16 17 18 19 20 21 22 23 24 25 26 27 28 29 30 31	1 2 3 4 5 6 7 8 9 10 11 12 13 14 15 16 17 18 19 20 21 22 23 24 25 26 27 28 29 30 31	1 2 3 4 5 6 7 8 9 10 11 12 13 14 15 16 17 18 19 20 21 22 23 24 25 26 27 28 29 30
October	November	December
1 2 3 4 5 6 7 8 9 10 11 12 13 14 15 16 17 18 19 20 21 22 23 24 25 26 27 28 29 30 31	1 2 3 4 5 6 7 8 9 10 11 12 13 14 15 16 17 18 19 20 21 22 23 24 25 26 27 28 29 30	1 2 3 4 5 6 7 8 9 10 11 12 13 14 15 16 17 18 19 20 21 22 23 24 25 26 27 28 29 30 31

TARGET HEALTH ISSUE

LOW COVERAGE AND
COMPLIANCE TO MDA

HIGH EXPOSURE TO VECTORS

POOR KNOWLEDGE, ATTITUDE,
AND PRACTICES



DOT MASS DRUG ADMINISTRATION



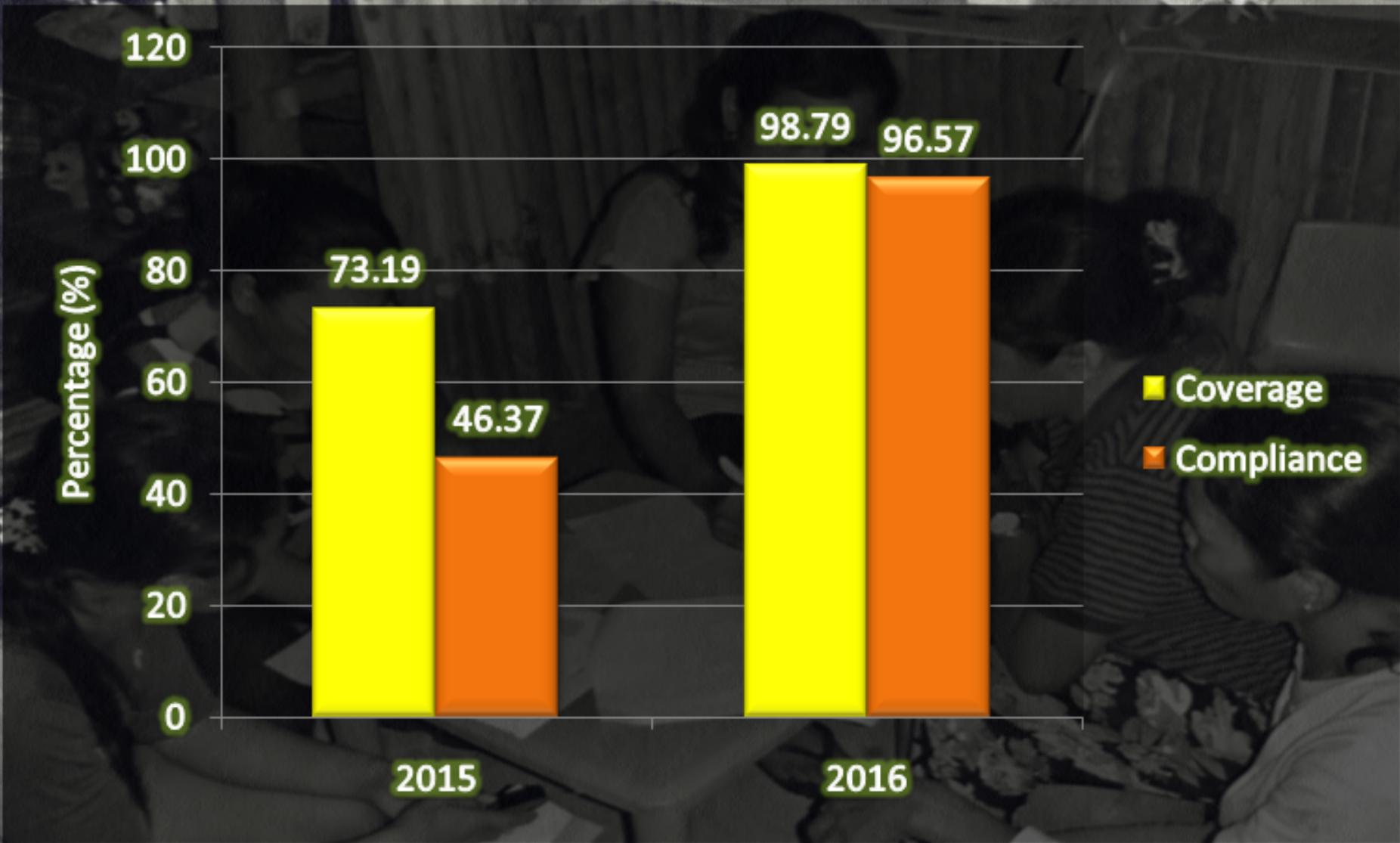
DISTRIBUTION OF ITMNs and PPEs



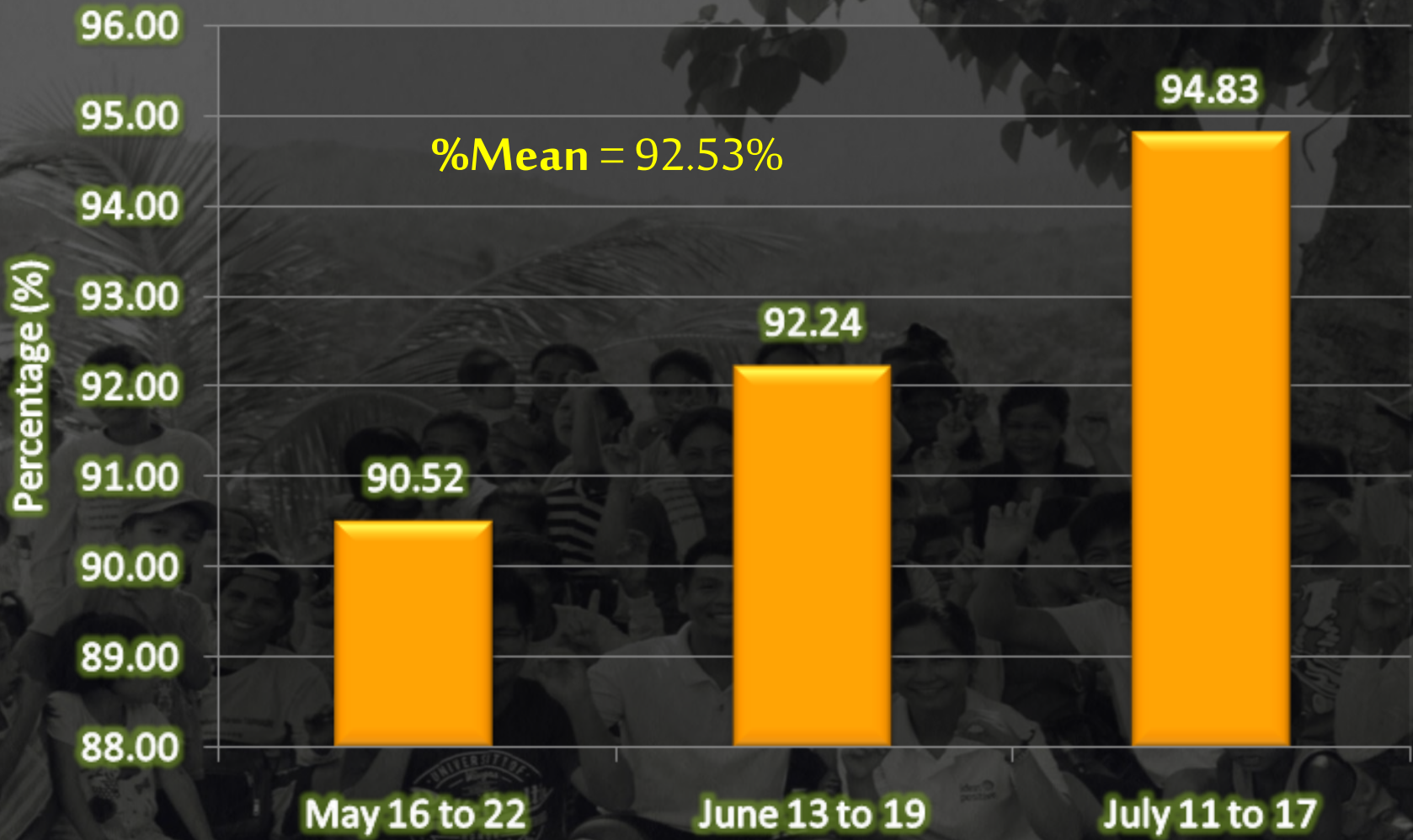
AGE STRATIFIED EDUCATIONAL CAMPAIGN

Key Intervention

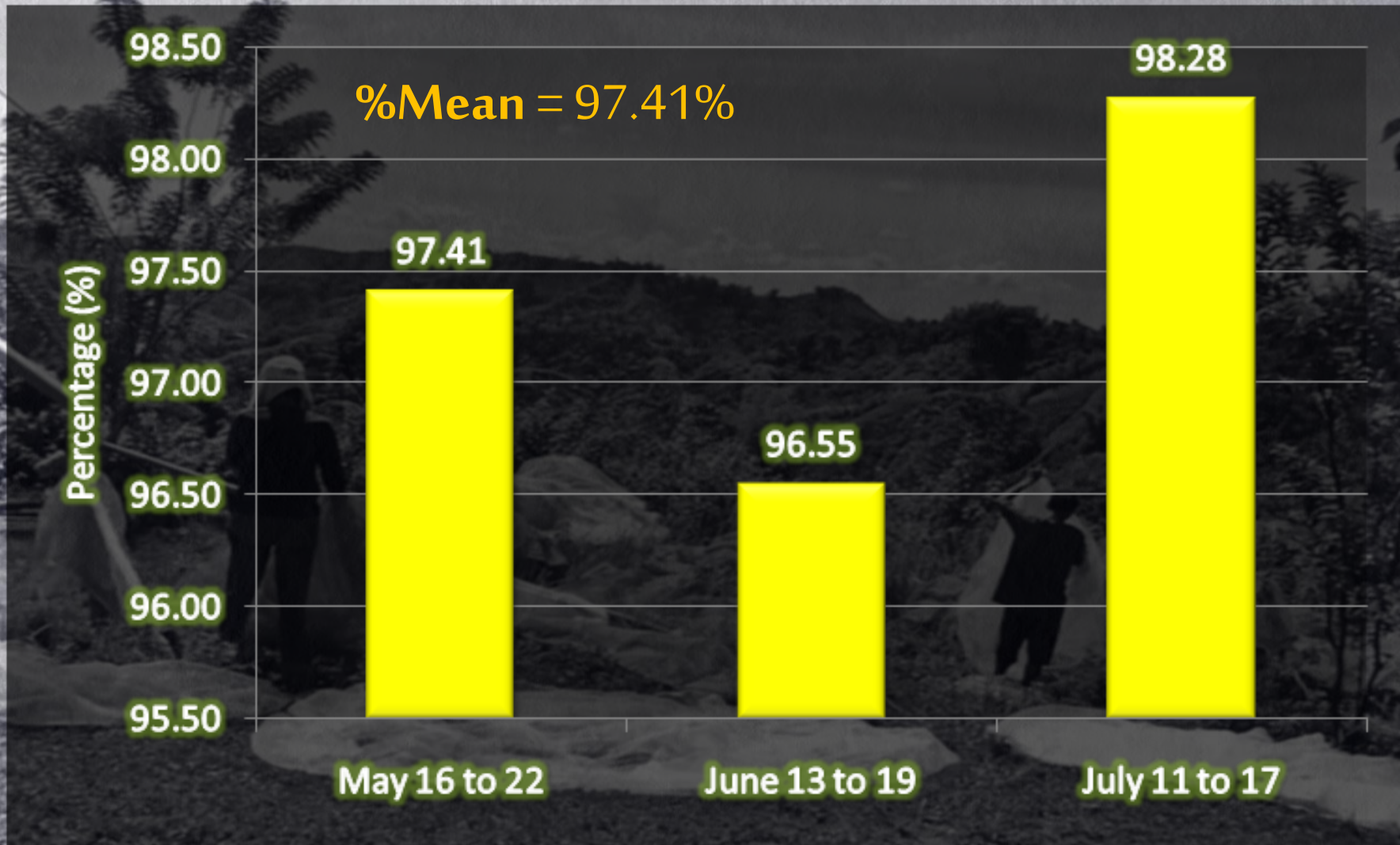
RESULTS



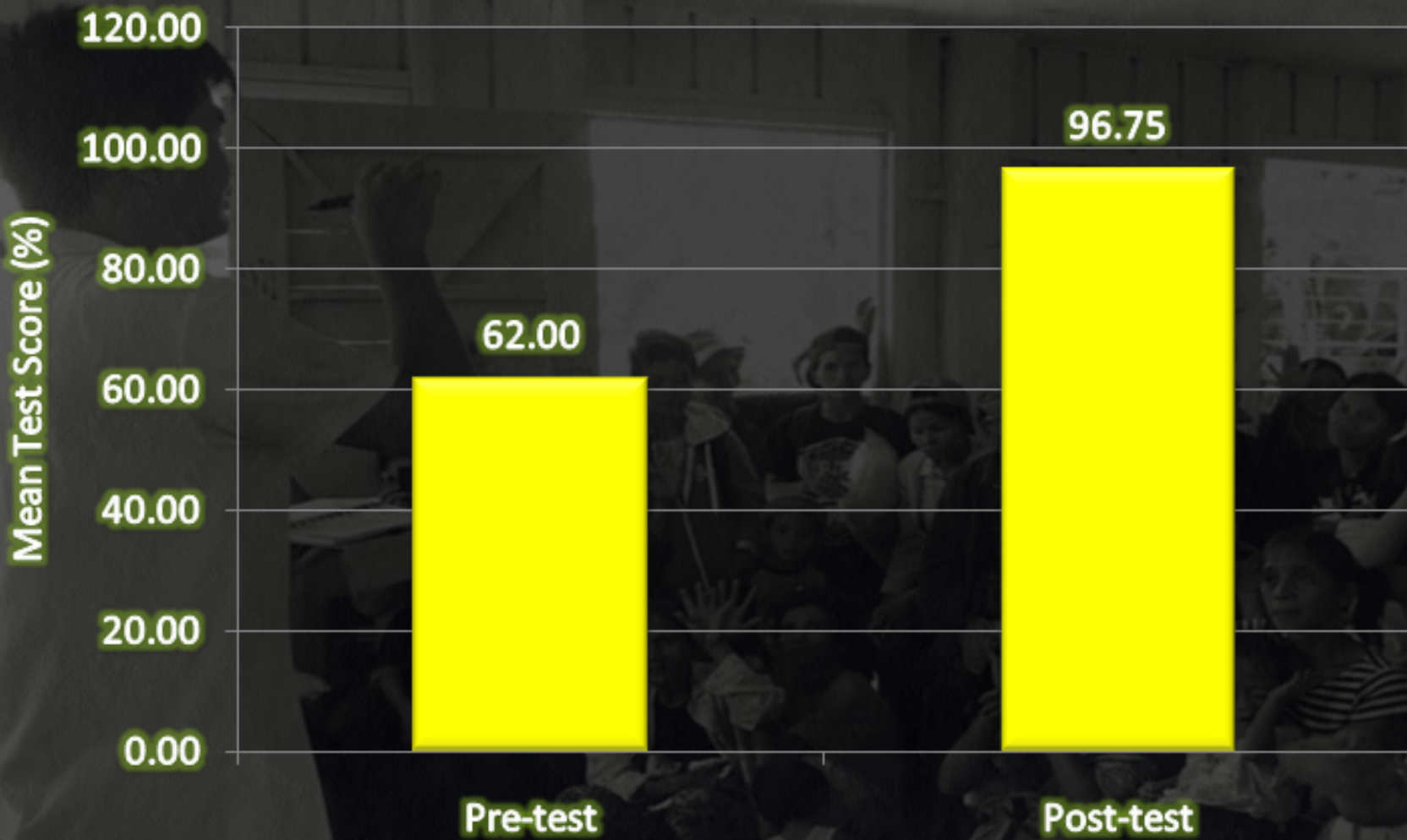
2015 vs 2016 Mean %Coverage and Compliance to MDA Drugs



% Usage of Personal Protective Equipment (PPEs)

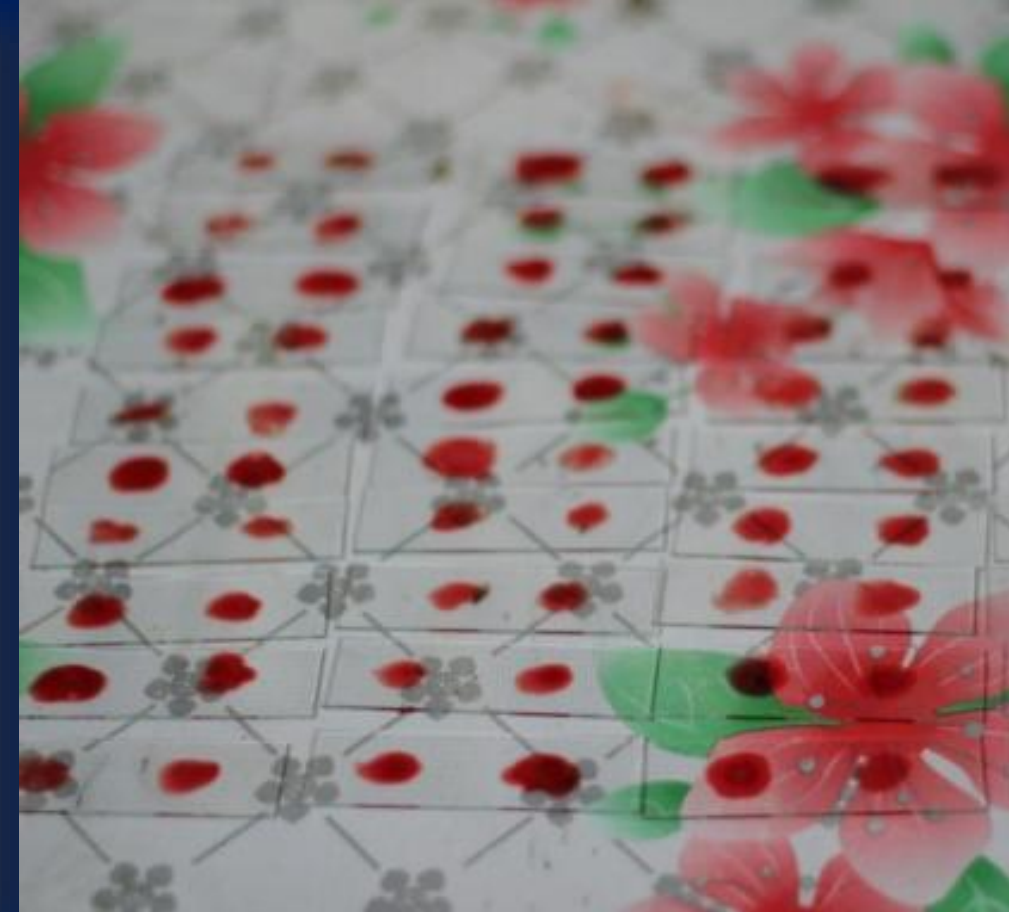


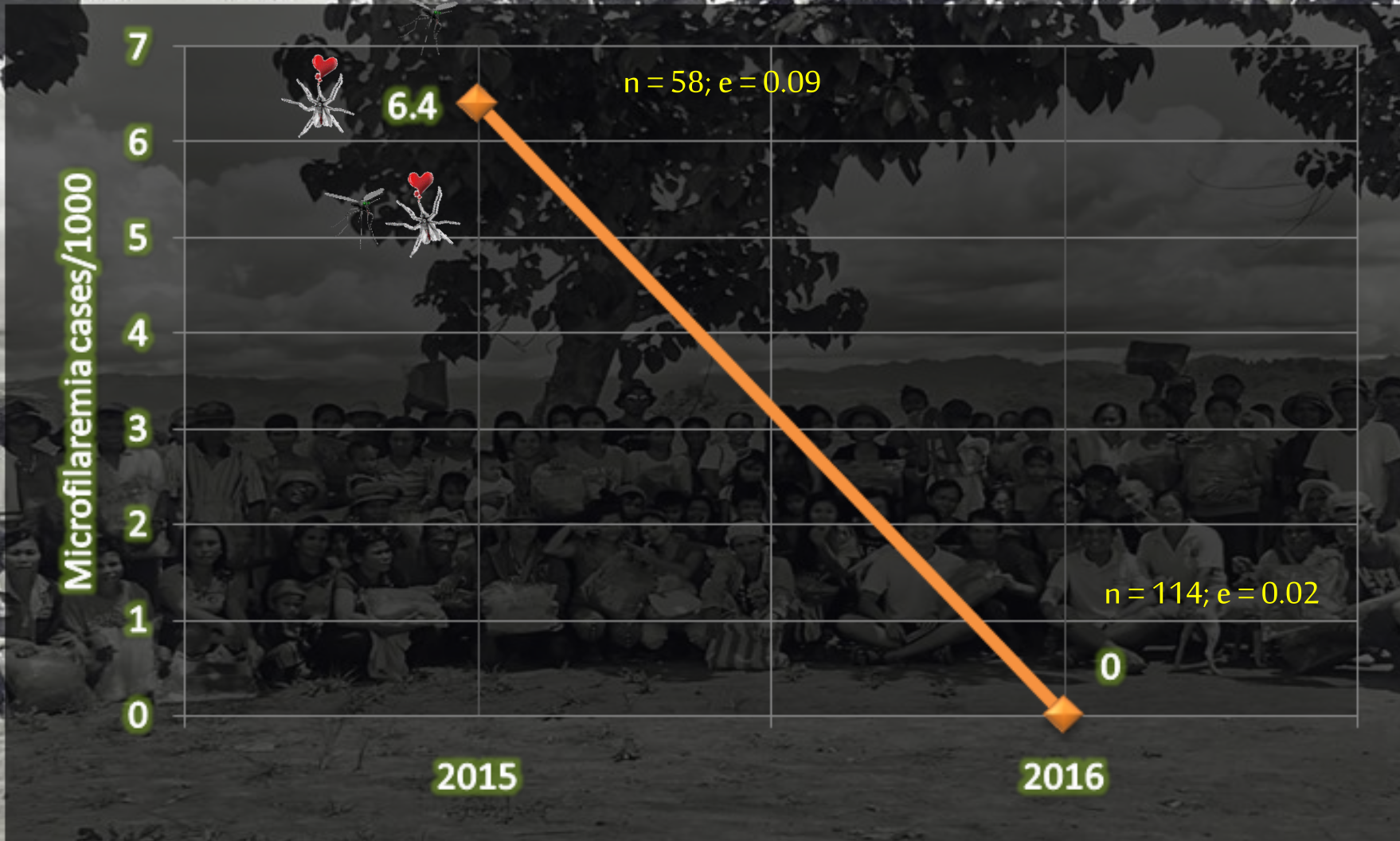
% UTILIZATION OF INSECTICIDE-TREATED MOSQUITO NETS (ITMN)







PRE-TEST VS. POST-TEST MEAN SCORES

Nocturnal Blood Smear





2015 VS 2016 MICROFILAREMIA RATE / 1000

Goal	Evaluation Method	Outcome	Attained?
To attain at least 95% compliance and at least 95% coverage to MDA	Direct Observation & Recordkeeping	98.79% Coverage and 96.57% Compliance	
To attain at least 90% usage of PPEs & 95% usage of ITMNs	Recordkeeping during spot inspections	92.53% mean usage of PPEs & 97.41% mean utilization of ITMNs	
To attain at least 80% mean population score in a post-implementation test	Recordkeeping during spot inspections	Population Post-Implementation Test Score Mean of 96.75%	
To attain a 0% microfilaremia rate	Nocturnal Blood Smear Examination	Microfilaremia rate of 0%	

For the underserved...